



➤ MEET THE CCs!.....1



➤ SOPHOMORE CORNER .....2



➤ CHECK US OUT.....2

# Commuter Focus

## Welcome Back Commuter Connector Mentees!

### Meet Your 2013-2014 CCs!

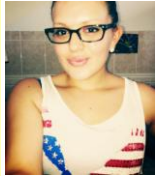
So you know your CC's name, but there is more to know!

**Tim Brubaker**



**First Year CC:** (Roc- Z)  
**Class year:** 2015  
**Random Fact:** "I'm Slovak and proud"

**Vivian Rivera**



**Sophomore CC:**  
**Class year:** 2015  
**Random Fact:** "I love to eat chicken noodle soup with Limón and hot sauce."  
**Commuter tip:**  
Regularly check the weather and traffic updates.

**Joanna Lipniarka**



**First Year CC:** (Gam-Lom)  
**Class year:** 2016  
**Random Fact:** "I love to eat Sauerkraut"  
**Commuter Tip:** "Always have an open mind and a positive attitude toward everything that you do, especially commuting."

**Mark Holland**



**First Year CC:** (Lon-Rob)  
**Class year:** 2016  
**Random Fact:** "I love practicing various types of martial arts and listening to piano & cello duets."  
**Commuter Tip:** "Get involved on campus and use your resources."

**Edward Jung**



**First Year CC:** (A-Gal)  
**Class year:** 2016  
**Random Fact:** I learned Cantonese as my first language and I was born in USA

**Check Out Page 2 for Upcoming Commuter Connector Events and Much More....**

## A Message from Doris, Your Commuter Student Services Coordinator!

Hello All,

I hope you are enjoying your first weeks of the new academic year here at La Salle. Whether it's your first semester or you're now a seasoned Explorer, I am beyond thrilled to have you as part of the Commuter Connector Program. For those who may not know me, my name is Doris Martinez and I serve as the



Commuter Student Services Coordinator for Off-Campus & Commuter Communities here at La Salle. My main focus is to provide you, the commuter student, with resources and a variety of programming throughout the academic year.

In addition to supervising the Commuter Connectors, I also will be creating a programming series for students over 25 years of age. You will be receiving emails from me throughout the year regarding various programs and much more. If you have any suggestions on enhancing the commuter experience here at La Salle, please contact me at [martinezd@lasalle.edu](mailto:martinezd@lasalle.edu).

Here's to a wonderful year!!

## Upcoming Commuter Connector Events!

*Commuter Connector mentees, we have been hard at work in creating programs that will give you an opportunity to meet other commuters while having a great time and building community on campus. Come and check out our upcoming events created just for you!*



### Waffle Wednesday

Wednesday, September 25  
8:30am-11am  
@ Commuter TV Lounge



**Sophomore Meetup**  
Thursday, September 26  
1pm – 2pm  
@ Commuter TV Lounge

## Sophomore Corner

If you were a freshman in the Commuter Connector program last year, you are automatically enrolled into our sophomore roster. The Commuter Connector Program has great resources for our sophomore class, check it out!

### The Sophomore Experience

- **Programming:** You have open access to attend all Commuter Connector Program. We have amazing programs scheduled this semester and you are automatically enrolled into the Commuter Rewards Program! (See Attachment for more details). Sophomore CCs will host a **Sophomore Meetup** once per semester at various location. The Sophomore Meetup is a series designed to build relationships with fellow sophomore commuters & discuss various topics chosen by YOU pertaining to your experience as a student. Be ready for our first Meetup this month!
- **Mentorship:** Your Sophomore Commuter Connector is required to meet with you once per semester for 30 minutes to chat about your commuter student experience at La Salle University thus far. Why is this important? In my time here at La Salle, commuters have often shared with me their challenges being a student, community, parking; the list goes on. Our Commuter Connectors have commuting experience and know the challenges you face first hand. Sophomore year also brings upon other concerns for many students such as seeking internships, study abroad options, rigorous academics, and much more. Your CC is a resource for you.
- **Resource Sharing:** Sophomore CCs author the *Sophomore Corner* feature of the Commuter Connector monthly electronic newsletter, *Commuter Focus*. The *Sophomore Corner* serves as a resource of information exclusively for sophomore mentees of the Commuter Connector program. So be sure to read this every month!

## Check Us Out!

Commuter Connectors are on Facebook, Twitter and Instagram! We have THREE social networking pages and a brand new La Salle website so you have easy access to information about what we are up to, events and more!

- ➔ [Studentaffairs.lasalle.edu/offcampus](http://Studentaffairs.lasalle.edu/offcampus)
- ➔ <http://www.facebook.com/commuterconnectors>
- ➔ [@LaSalle CCs](https://twitter.com/LaSalle_CCs)
- ➔ [commuterconnectors#](https://www.instagram.com/commuterconnectors#)